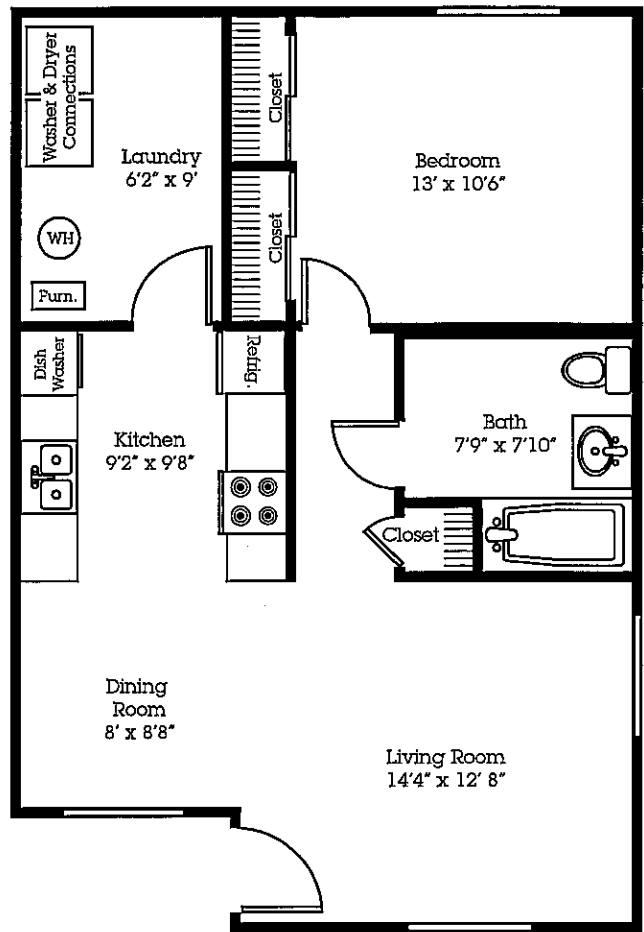


**Upper Level**  
Approx. 720 Sq. Feet



**Lower Level**  
Approx. 700 Sq. Feet

## 1 Bedroom Apartment

### Special Features:

- Frost-Free Refrigerator
- Self-Cleaning Oven
- Dishwasher
- 40 Gallon Water Heater
- Energy Efficient Gas Heat & Central Air
- Mini Blinds
- Spacious Closets
- Private Entry
- Handicap Accessible (Lower Level) &
- Handicap Equipped Units Available &

Rental Amount \$ \_\_\_\_\_

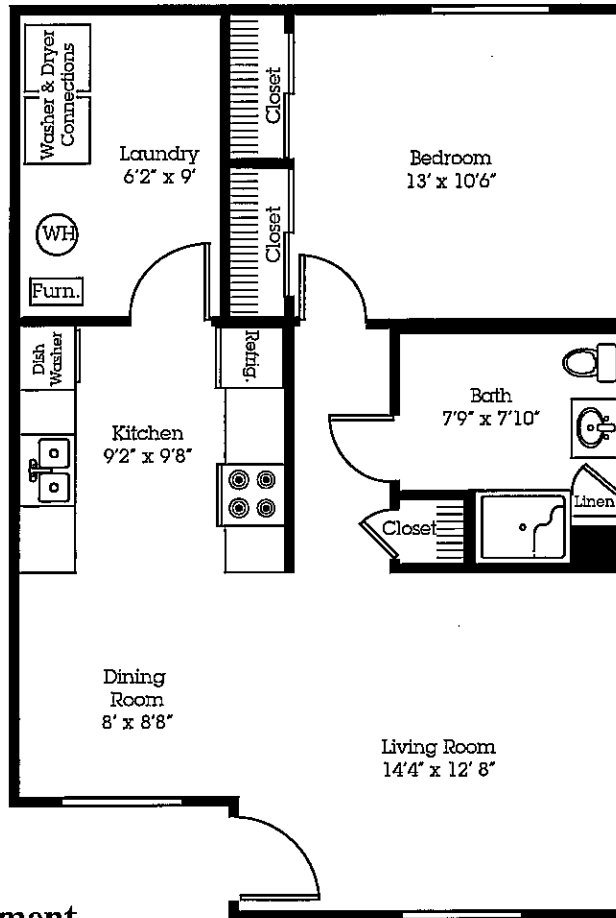
Deposit Amount \$ \_\_\_\_\_

Application Fee \$ \_\_\_\_\_

# Springcreek

APARTMENTS ♦ TOWNHOMES

**A10**  
Lower Level  
Shower Only



## 1 Bedroom Apartment

Approx. 681 Square Feet

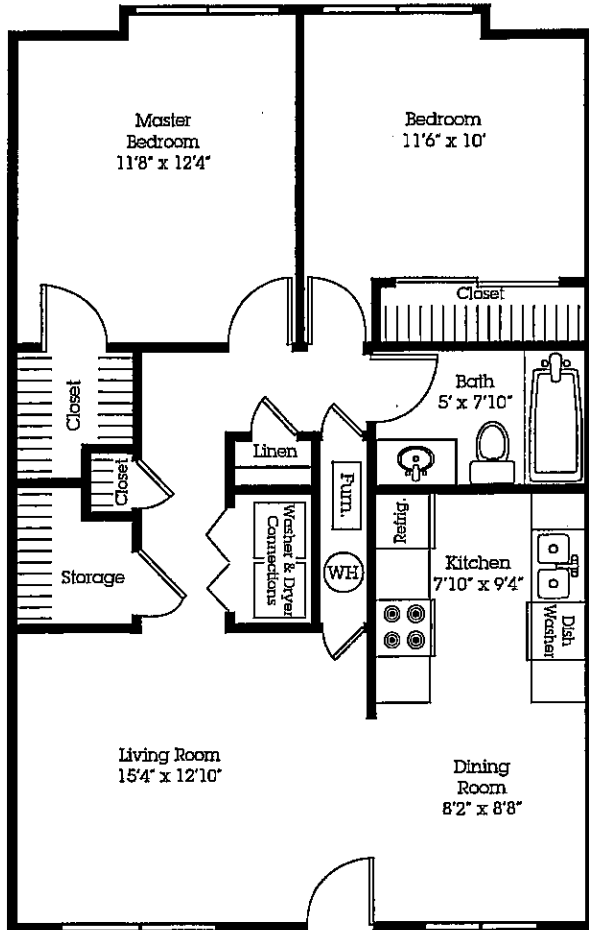
### Special Features:

- Frost-Free Refrigerator
- Self-Cleaning Oven
- Front Control Panel On Stove
- Dishwasher
- Lowered Countertops In Kitchen
- Washer & Dryer Connections
- 40 Gallon Water Heater
- Energy Efficient Gas Heat & Central Air
- Roll-In Shower
- Accessible Lavatory
- Mini Blinds
- Spacious Closets
- Private Entry
- Handicap Accessible (Lower Level) ♿
- Handicap Equipped Units Available ♿

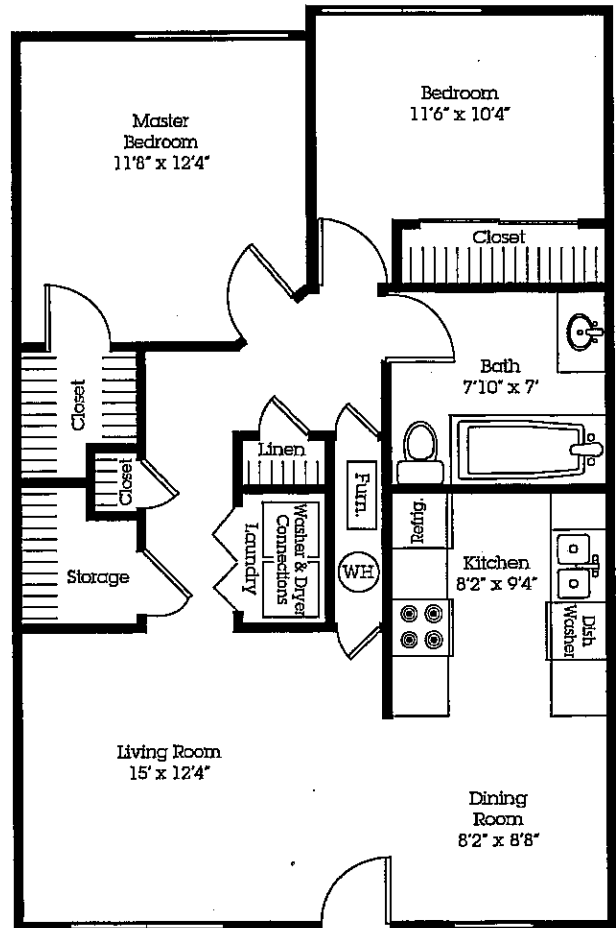
Rental Amount \$ \_\_\_\_\_

Deposit Amount \$ \_\_\_\_\_

Application Fee \$ \_\_\_\_\_



**Upper Level**  
Approx. 920 Sq. Feet



**Lower Level**  
Approx. 910 Sq. Feet

## 2 Bedroom Apartment

### Special Features:

- Frost-Free Refrigerator
- Self-Cleaning Oven
- Dishwasher
- Washer & Dryer Connections
- 40 Gallon Water Heater
- Energy Efficient Gas Heat & Central Air
- Mini Blinds
- Spacious Closets & Storage Space
- Private Entry
- Shower Available (Lower Level)
- Handicap Accessible (Lower Level) ♿

Rental Amount \$ \_\_\_\_\_

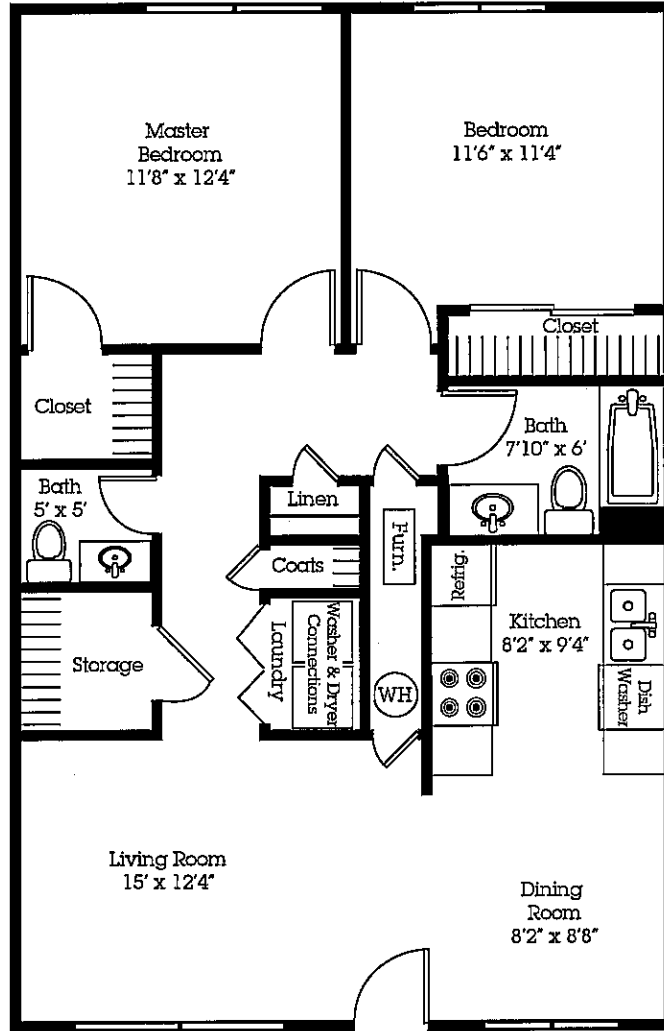
Deposit Amount \$ \_\_\_\_\_

Application Fee \$ \_\_\_\_\_

# Springcreek

APARTMENTS ♦ TOWNHOMES

**B10**  
Upper Level  
1 1/2 Bath



## 2 Bedroom Apartment

Approx. 920 Square Feet

### Special Features:

- 1 1/2 Baths
- Frost-Free Refrigerator
- Self-Cleaning Oven
- Dishwasher
- Washer & Dryer Connections
- 40 Gallon Water Heater
- Energy Efficient Gas Heat & Central Air
- Mini Blinds
- Spacious Closets & Storage Space
- Private Entry

Rental Amount \$ \_\_\_\_\_

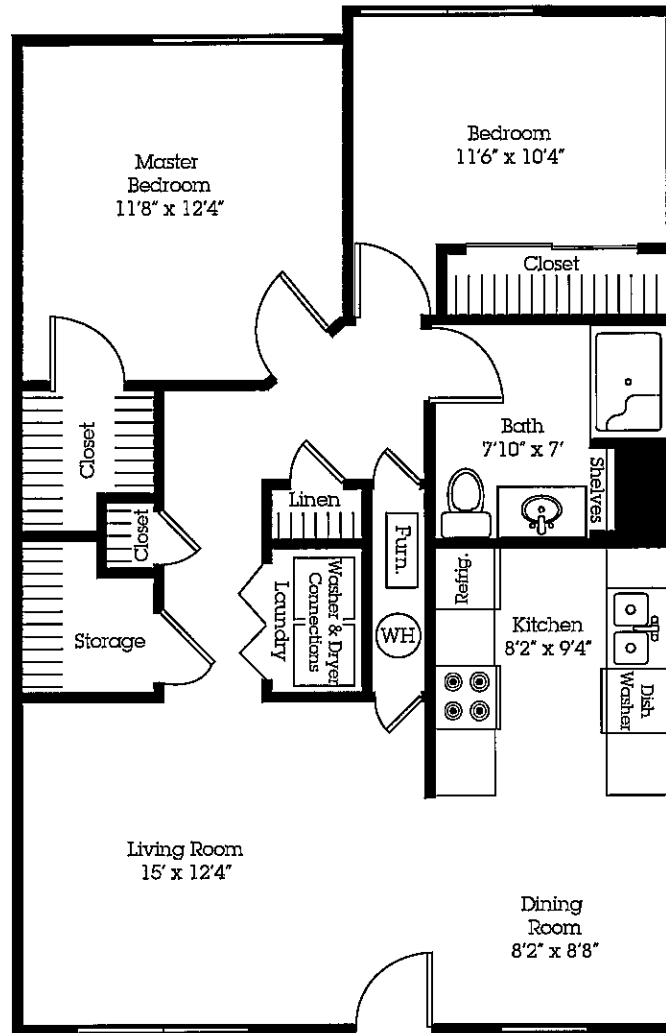
Deposit Amount \$ \_\_\_\_\_

Application Fee \$ \_\_\_\_\_

# Springcreek

APARTMENTS ♦ TOWNHOMES

**B11**  
Lower Level  
Shower Only



## 2 Bedroom Apartment

Approx. 920 Square Feet

### Special Features:

- Frost-Free Refrigerator
- Self-Cleaning Oven
- Dishwasher
- Washer & Dryer Connections
- 40 Gallon Water Heater
- Energy Efficient Gas Heat & Central Air
- Mini Blinds
- Spacious Closets & Storage Space
- Private Entry
- Handicap Accessible (Lower Level) ♿

Rental Amount \$ \_\_\_\_\_

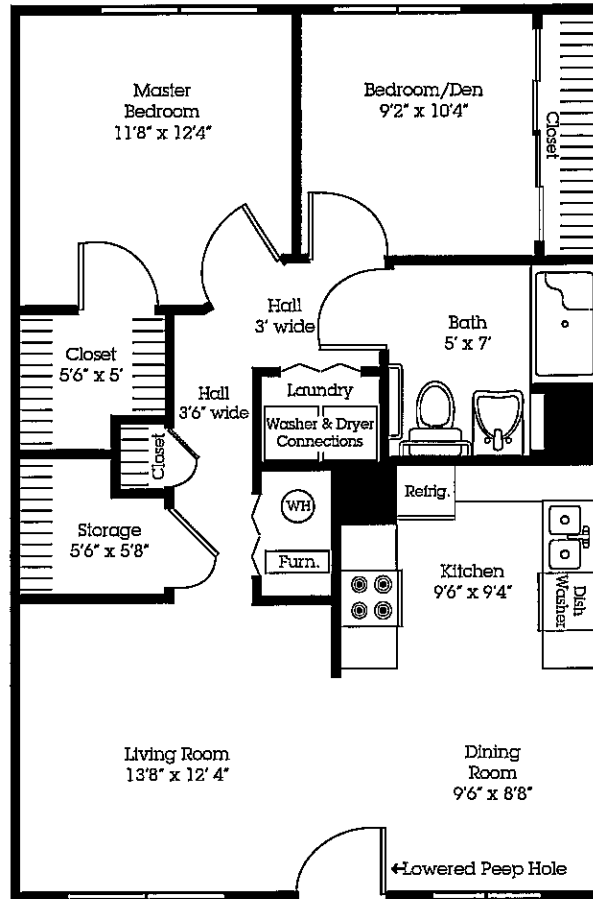
Deposit Amount \$ \_\_\_\_\_

Application Fee \$ \_\_\_\_\_

# Springcreek

APARTMENTS ♦ TOWNHOMES

**B14** &  
Handicap Equipped



## 2 Bedroom Apartment

Approx. 920 Square Feet

### Special Features:

- Frost-Free Refrigerator
- Self-Cleaning Oven
- Front Control Panel On Stove
- Dishwasher
- Lowered Countertops In Kitchen
- Washer & Dryer Connections
- 40 Gallon Water Heater
- Energy Efficient Gas Heat & Central Air
- Roll-In Shower
- Accessible Lavatory
- Mini Blinds
- Spacious Closets & Storage Space
- Private Entry

Rental Amount \$ \_\_\_\_\_

Deposit Amount \$ \_\_\_\_\_

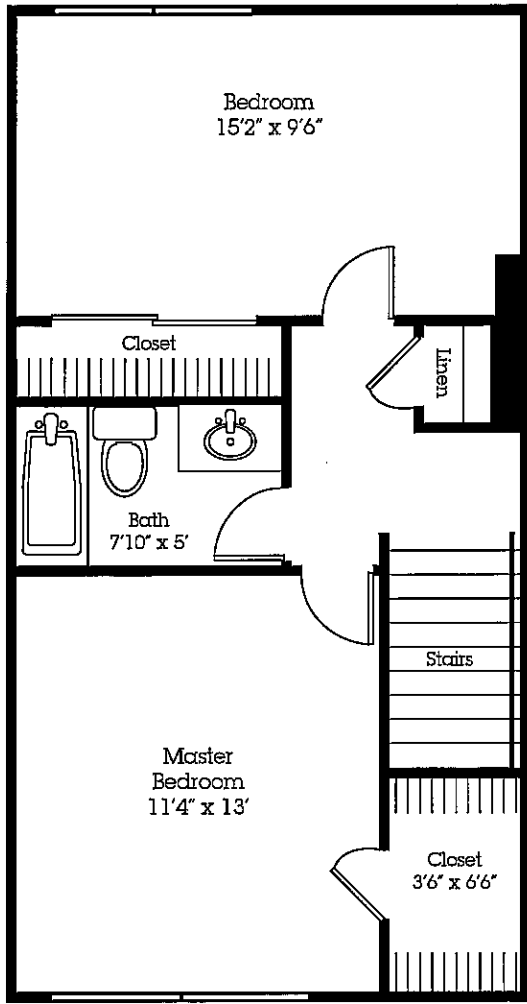
Application Fee \$ \_\_\_\_\_



# Springcreek

APARTMENTS ♦ TOWNHOMES

C2



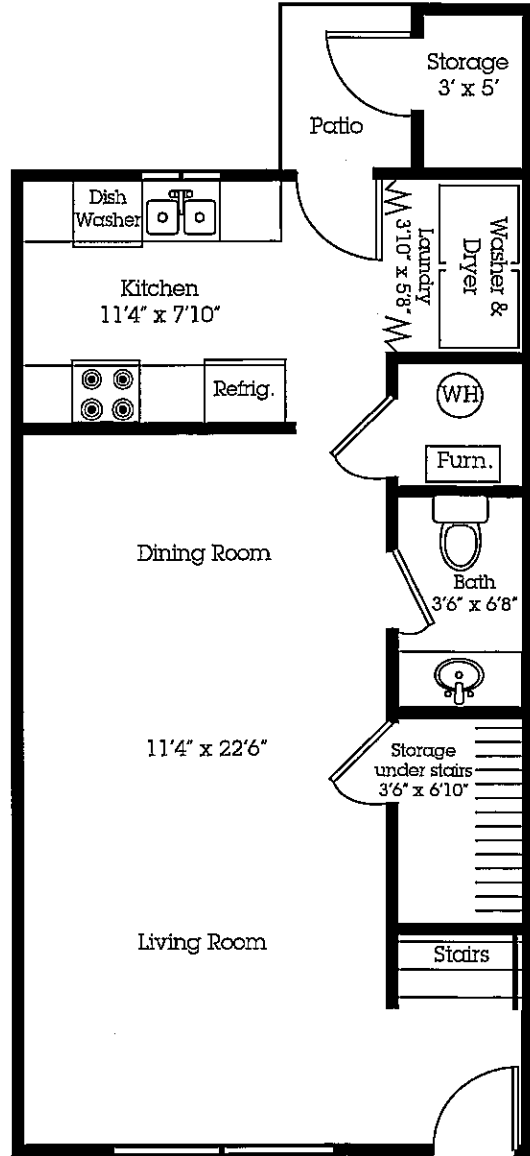
**2nd Floor**

**2 Bedroom Townhome**

Approx. 960 Square Feet

**Special Features:**

- 1 1/2 Baths
- Frost-Free Refrigerator
- Self-Cleaning Oven
- Dishwasher
- Washer & Dryer Connections
- 40 Gallon Water Heater
- Energy Efficient Gas Heat & Central Air
- Mini Blinds
- Spacious Closets & Storage Space
- Private Entry
- Back Patio With Storage
- Backdoor By Kitchen



**1st Floor**

Rental Amount \$ \_\_\_\_\_

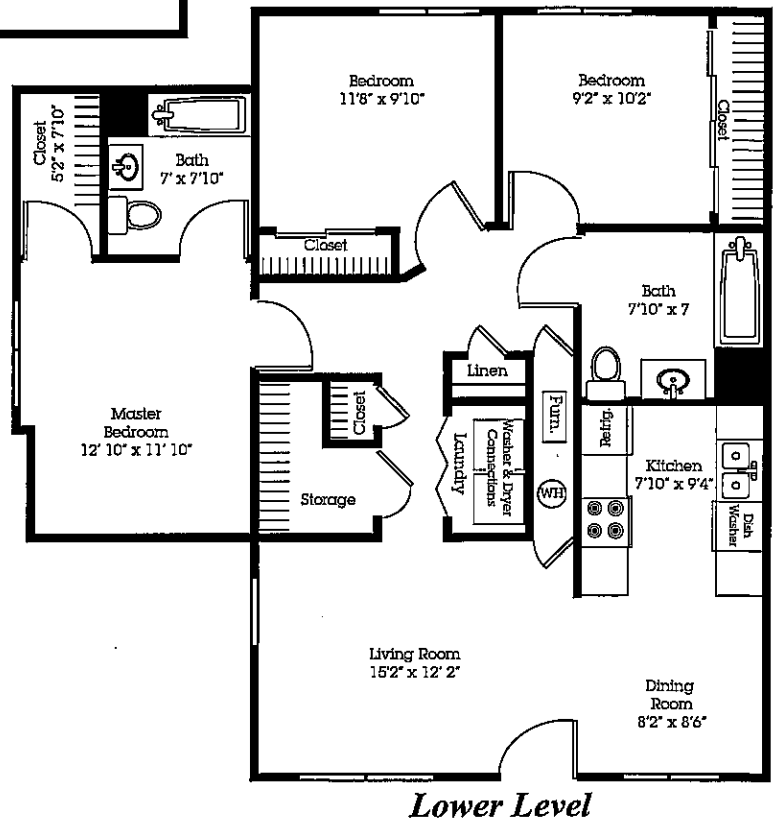
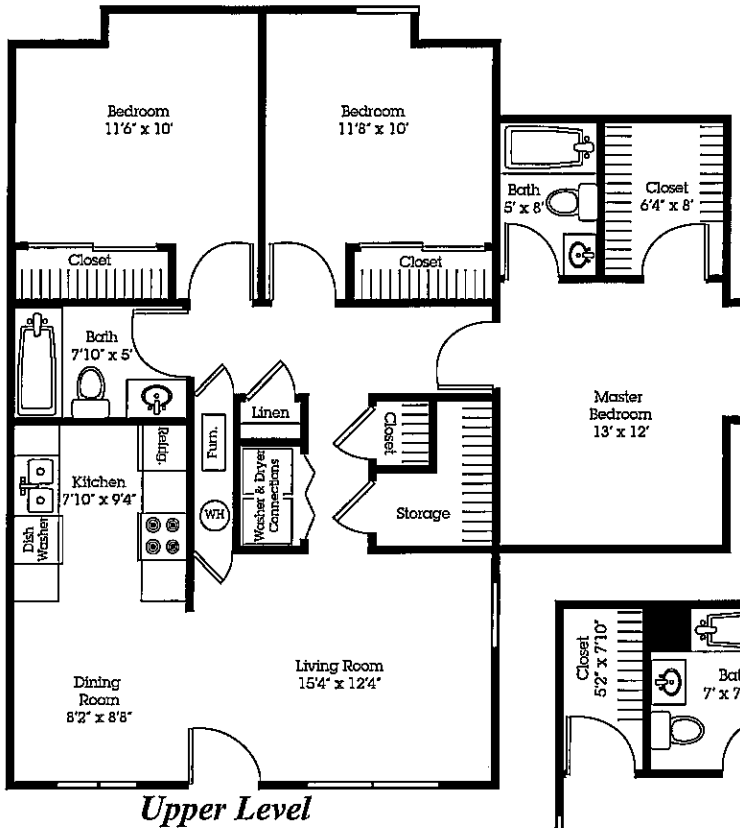
Deposit Amount \$ \_\_\_\_\_

Application Fee \$ \_\_\_\_\_

# Springcreek

APARTMENTS ♦ TOWNHOMES

D1 / D2



### 3 Bedroom Apartment

Approx. 1,100 Square Feet

#### Special Features:

- 2 Full Baths
- Frost-Free Refrigerator
- Self-Cleaning Oven
- Dishwasher
- Washer & Dryer Connections
- 40 Gallon Water Heater
- Energy Efficient Gas Heat & Central Air
- Mini Blinds
- Spacious Closets & Storage Space
- Private Entry
- Handicap Accessible (Lower Level) ♿

Rental Amount \$ \_\_\_\_\_

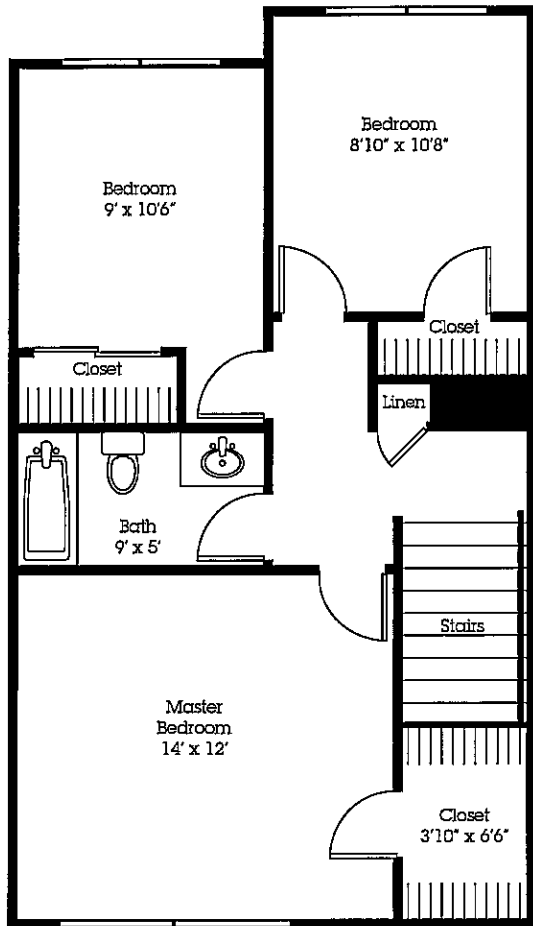
Deposit Amount \$ \_\_\_\_\_

Application Fee \$ \_\_\_\_\_

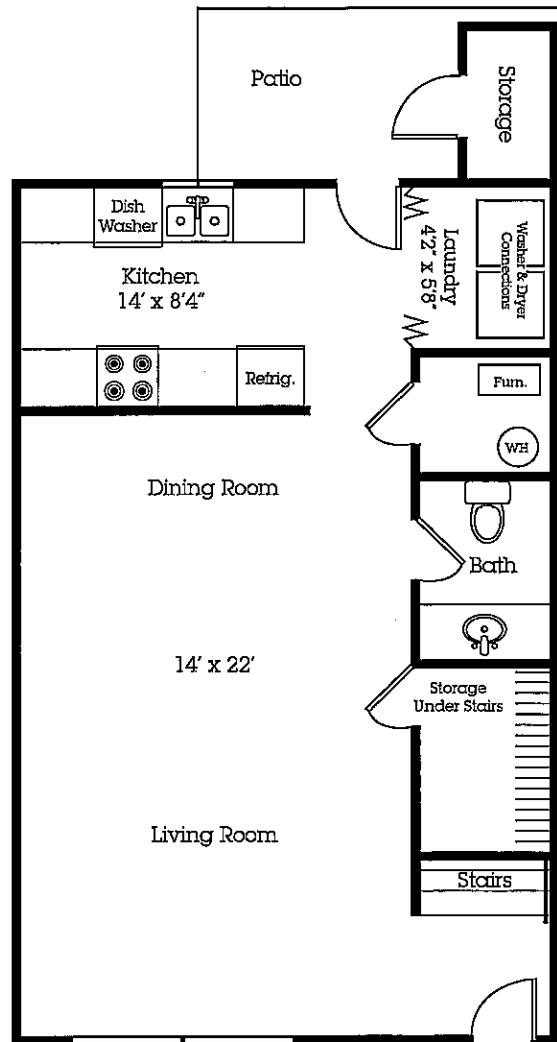
# Springcreek

APARTMENTS ♦ TOWNHOMES

**E2**



*2nd Floor*



*1st Floor*

**3 Bedroom Townhome**

Approx. 1,280 Square Feet

**Special Features:**

- 1 1/2 Baths
- Frost-Free Refrigerator
- Self-Cleaning Oven
- Dishwasher
- Washer & Dryer Connections
- 40 Gallon Water Heater
- Energy Efficient Gas Heat & Central Air
- Mini Blinds
- Spacious Closets & Storage Space
- Private Entry
- Backdoor By Kitchen
- Back Patio With Storage

**Rental Amount \$** \_\_\_\_\_

**Deposit Amount \$** \_\_\_\_\_

**Application Fee \$** \_\_\_\_\_

