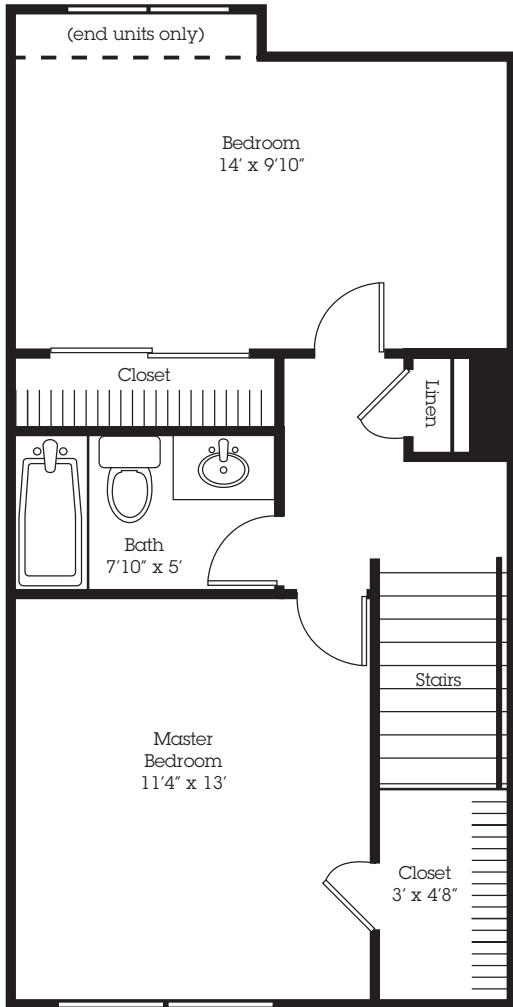


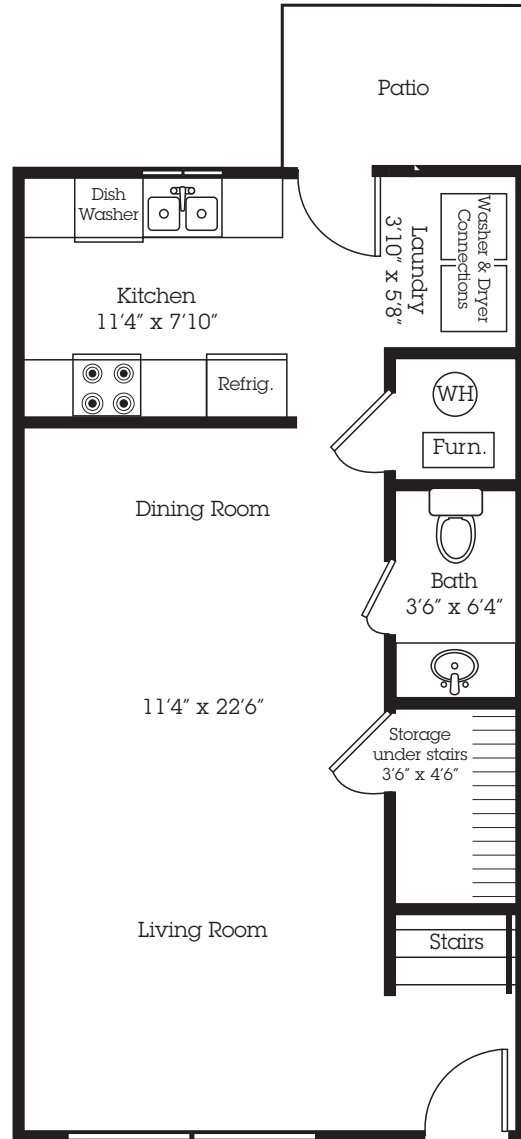
# Cross Creek

APARTMENTS ♦ TOWNHOMES

**C1**



**2nd Floor**



**1st Floor**

## 2 Bedroom Townhome

Approx. 960 Square Feet

### Special Features:

- 1 1/2 Baths
- Frost-Free Refrigerator
- Self-Cleaning Oven
- Dishwasher
- Washer & Dryer Connections
- 40 Gallon Water Heater
- Energy Efficient Gas Heat & Central Air
- Mini Blinds
- Spacious Closets & Storage Space
- Private Entry
- Back Door By Kitchen
- Back Patio

**Rental Amount** \$ \_\_\_\_\_

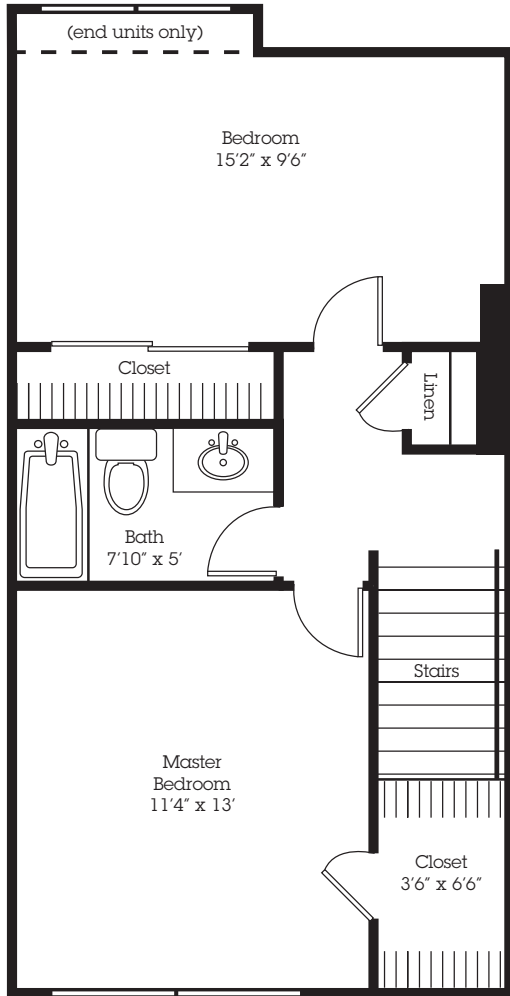
**Deposit Amount** \$ \_\_\_\_\_

**Application Fee** \$ \_\_\_\_\_

# Cross Creek

APARTMENTS ♦ TOWNHOMES

**C2**



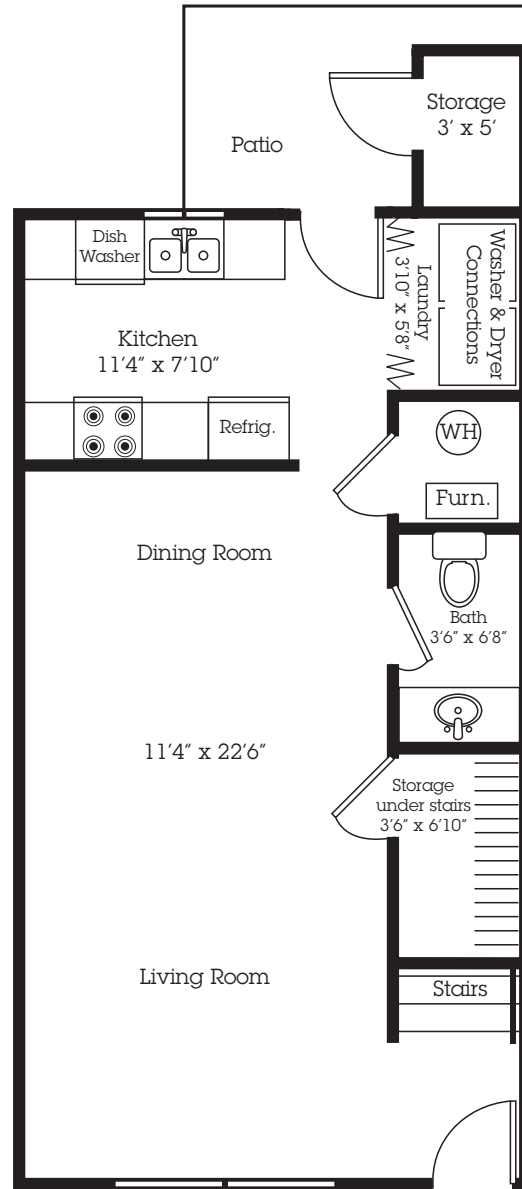
**2nd Floor**

**2 Bedroom Townhome**

Approx. 960 Square Feet

**Special Features:**

- 1 1/2 Baths
- Frost-Free Refrigerator
- Self-Cleaning Oven
- Dishwasher
- Washer & Dryer Connections
- 40 Gallon Water Heater
- Energy Efficient Gas Heat & Central Air
- Mini Blinds
- Spacious Closets & Storage Space
- Private Entry
- Back Door By Kitchen
- Back Patio with Storage



**1st Floor**

**Rental Amount \$** \_\_\_\_\_

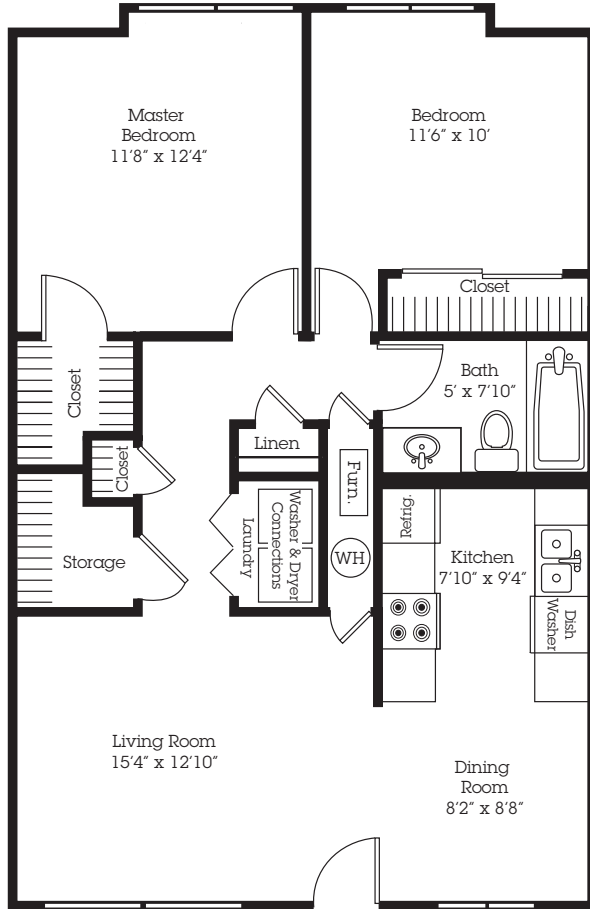
**Deposit Amount \$** \_\_\_\_\_

**Application Fee \$** \_\_\_\_\_

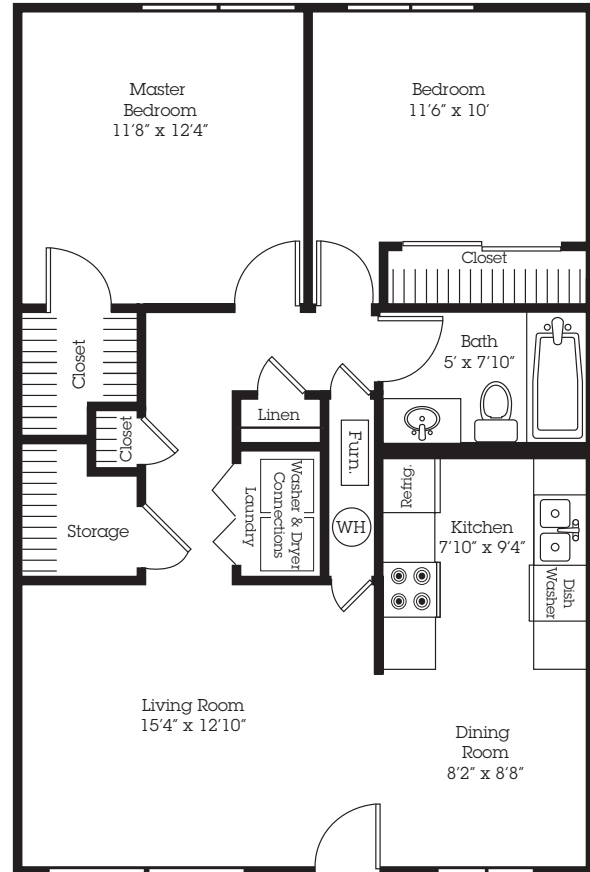
# Cross Creek

APARTMENTS ❖ TOWNHOMES

**B2**



**Upper Level**  
Approx. 930 Sq. Feet



**Lower Level**  
Approx. 920 Sq. Feet

## 2 Bedroom Apartment Special Features:

- Frost-Free Refrigerator
- Self-Cleaning Oven
- Dishwasher
- Washer & Dryer Connections
- 40 Gallon Water Heater
- Energy Efficient Gas Heat & Central Air
- Mini Blinds or Vertical Blinds
- Spacious Closets & Storage Space
- Private Entry
- Balcony (Upper Level)
- Handicap Accessible (Lower Level) ♿

**Rental Amount** \$ \_\_\_\_\_

**Deposit Amount** \$ \_\_\_\_\_

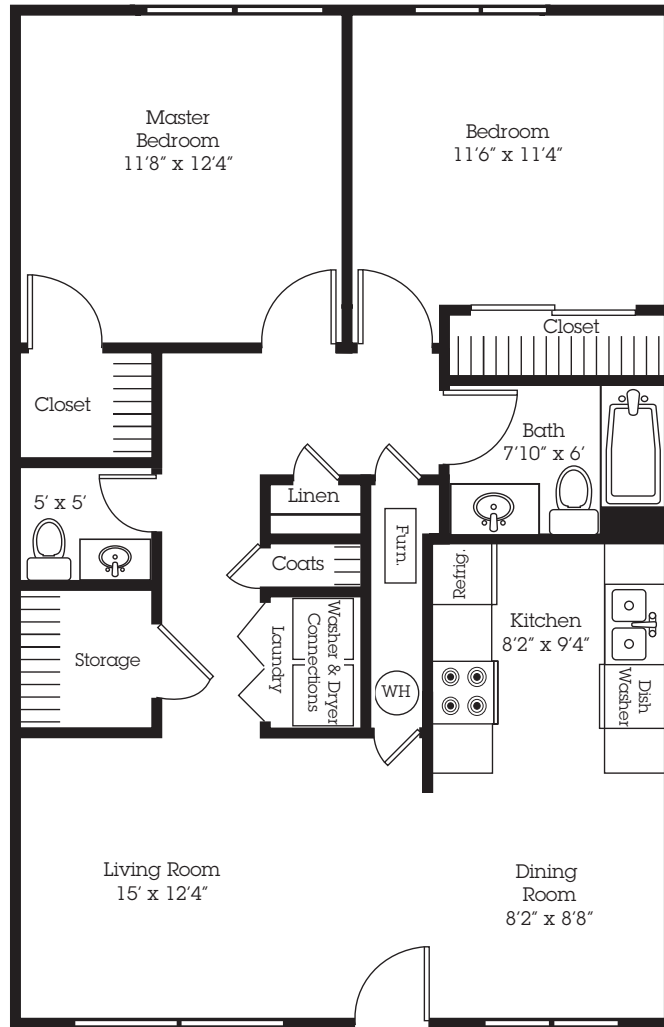
**Application Fee** \$ \_\_\_\_\_

# Cross Creek

APARTMENTS ❖ TOWNHOMES

**B10**

1 1/2 Bath



## 2 Bedroom Apartment

Approx. 920 Square Feet

### Special Features:

- 1 1/2 Baths
- Frost-Free Refrigerator
- Self-Cleaning Oven
- Dishwasher
- Washer & Dryer Connections
- 40 Gallon Water Heater
- Energy Efficient Gas Heat & Central Air
- Mini Blinds
- Spacious Closets & Storage Space
- Private Entry
- Balcony

Rental Amount \$ \_\_\_\_\_

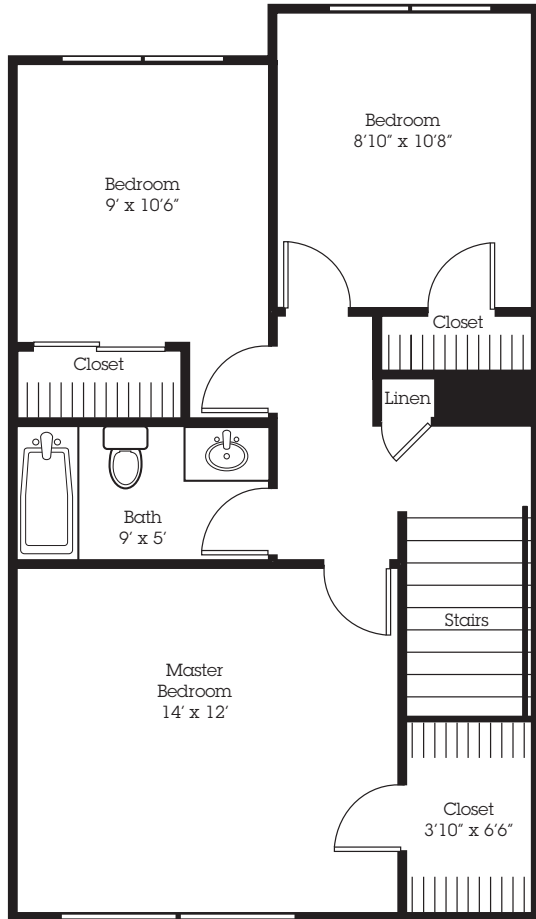
Deposit Amount \$ \_\_\_\_\_

Application Fee \$ \_\_\_\_\_

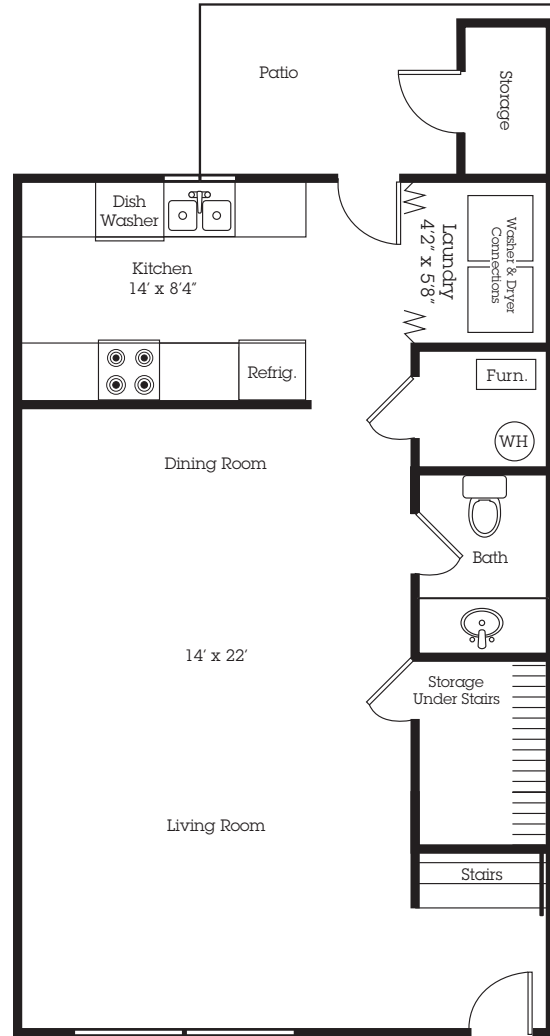
# Cross Creek

APARTMENTS ♦ TOWNHOMES

**E2**



**2nd Floor**



**1st Floor**

### 3 Bedroom Townhome

Approx. 1,280 Square Feet

#### Special Features:

- 1 1/2 Baths
- Frost-Free Refrigerator
- Self-Cleaning Oven
- Dishwasher
- Washer & Dryer Connections
- 40 Gallon Water Heater
- Energy Efficient Gas Heat & Central Air
- Mini Blinds
- Spacious Closets & Storage Space
- Private Entry
- Back Door By Kitchen
- Back Patio with Storage

**Rental Amount \$** \_\_\_\_\_

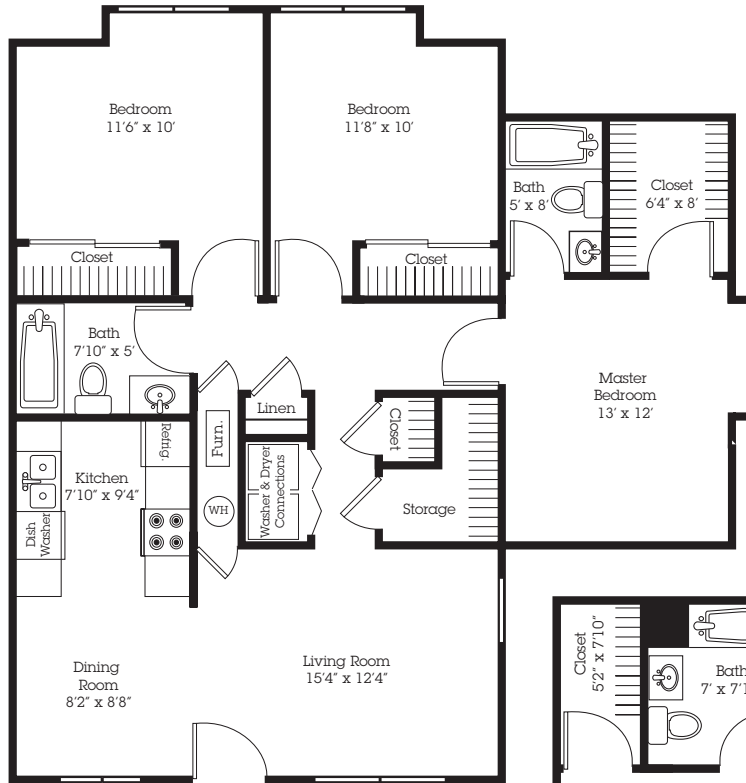
**Deposit Amount \$** \_\_\_\_\_

**Application Fee \$** \_\_\_\_\_

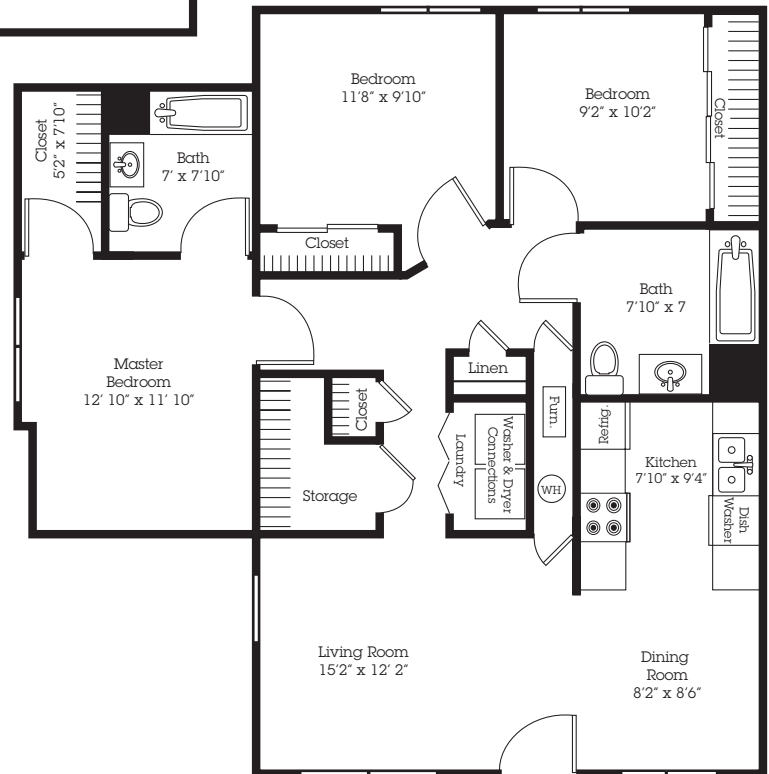
# Cross Creek

APARTMENTS ❖ TOWNHOMES

**D1 & D2**



*Upper Level*



*Lower Level*

### 3 Bedroom Apartment

Approx. 1,100 Square Feet

#### Special Features:

- 2 Full Baths
- Frost-Free Refrigerator
- Self-Cleaning Oven
- Dishwasher
- Washer & Dryer Connections
- 40 Gallon Water Heater
- Energy Efficient Gas Heat & Central Air
- Mini Blinds
- Spacious Closets & Storage Space
- Private Entry
- Balcony (Upper Level)
- Handicap Accessible (Lower Level) ♿

**Rental Amount \$** \_\_\_\_\_

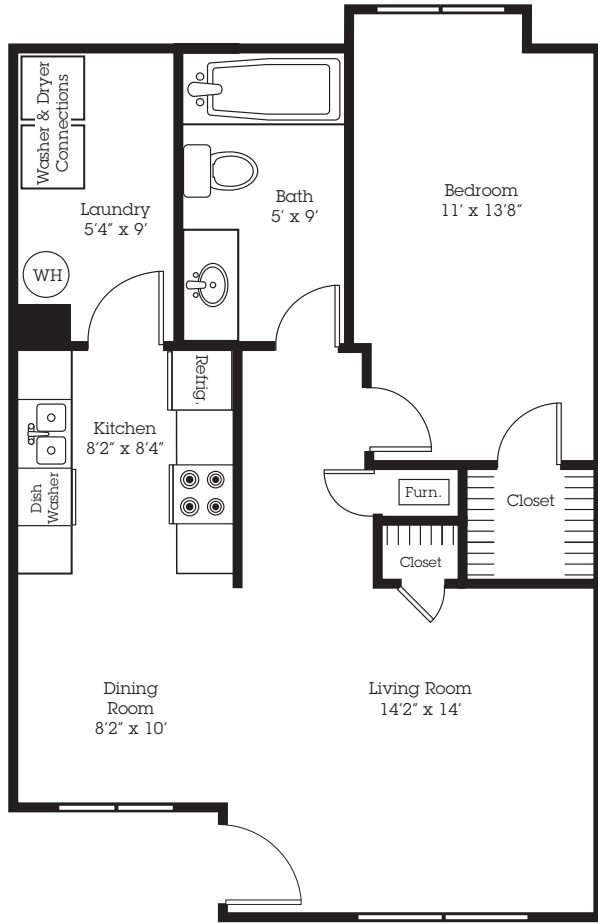
**Deposit Amount \$** \_\_\_\_\_

**Application Fee \$** \_\_\_\_\_

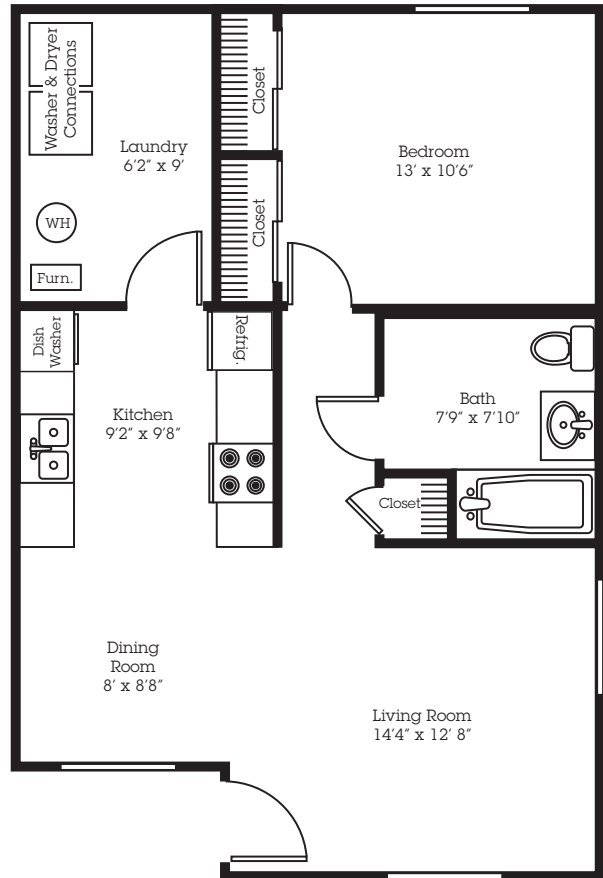
# Cross Creek

APARTMENTS ♦ TOWNHOMES

**A3**



*Upper Level*



*Lower Level*

## 1 Bedroom Apartment

Approx. 720 Square Feet

### Special Features:

- Frost-Free Refrigerator
- Self-Cleaning Oven
- Dishwasher
- Washer & Dryer Connections
- 40 Gallon Water Heater
- Energy Efficient Gas Heat & Central Air
- Mini Blinds
- Spacious Closets
- Private Entry
- Handicap Accessible (Lower Level) ♿


**Rental Amount** \$ \_\_\_\_\_

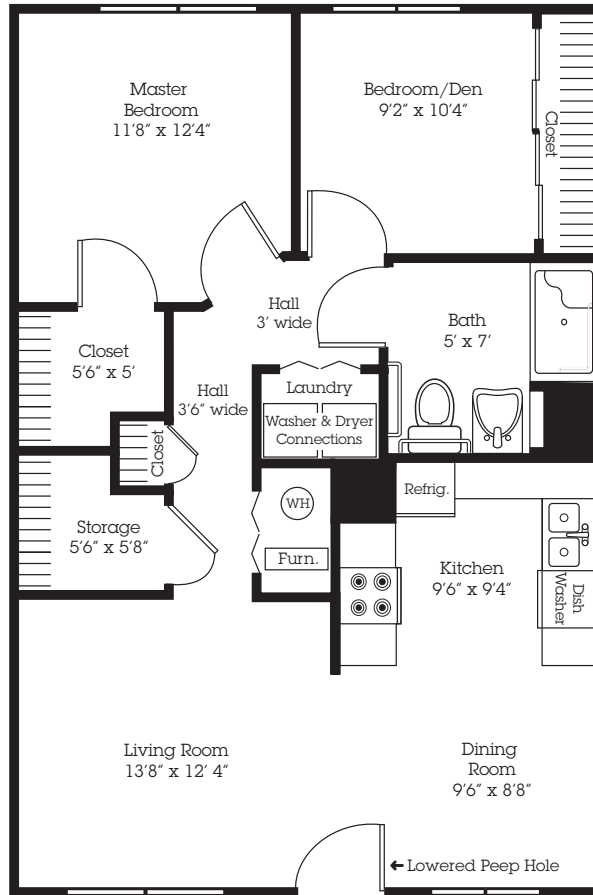
**Deposit Amount** \$ \_\_\_\_\_

**Application Fee** \$ \_\_\_\_\_

# Cross Creek

APARTMENTS ♦ TOWNHOMES

**B14**   
Handicap Equipped



## 2 Bedroom Apartment

Approx. 920 Square Feet

### Special Features:

- Frost-Free Refrigerator
- Self-Cleaning Oven
- Front Control Panel On Stove
- Dishwasher
- Lowered Countertops In Kitchen
- Washer & Dryer Connections
- 40 Gallon Water Heater
- Energy Efficient Gas Heat & Central Air
- Roll-In Shower
- Accessible Lavatory
- Mini Blinds
- Spacious Closets & Storage Space
- Private Entry

Rental Amount \$ \_\_\_\_\_

Deposit Amount \$ \_\_\_\_\_

Application Fee \$ \_\_\_\_\_



7750 East 32nd Street North • Wichita, KS 67226 • Phone: (316) 636-1999 • Fax: (316) 634-1001

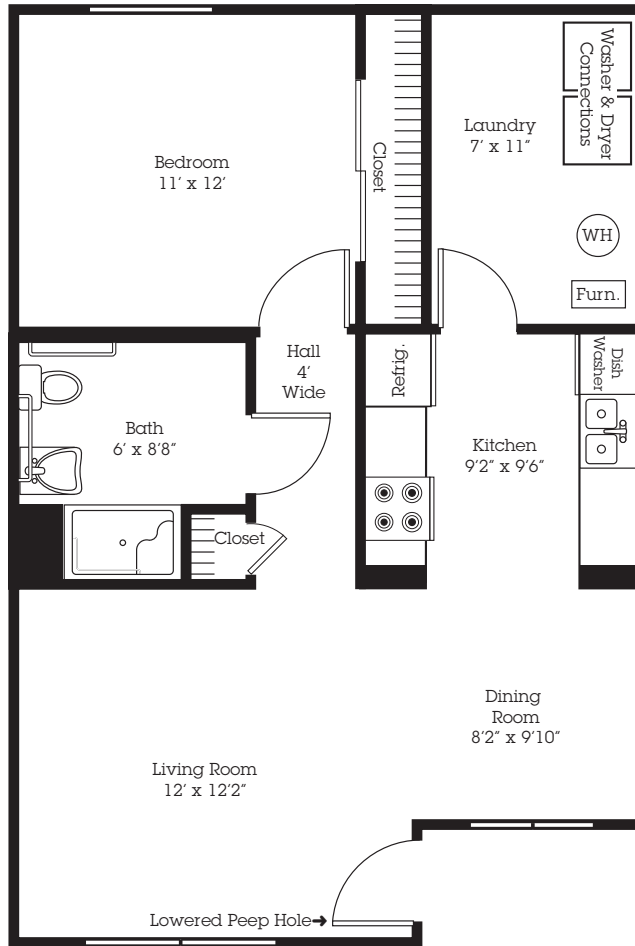
Professionally Managed by Mid-Land Management, Inc.



# Cross Creek

APARTMENTS ♦ TOWNHOMES

**A10** ♿  
Handicapped  
Equipped



## 1 Bedroom Apartment

Approx. 681 Square Feet

### Special Features:

- Frost-Free Refrigerator
- Self-Cleaning Oven
- Front Control Panel On Stove
- Dishwasher
- Lowered Countertops In Kitchen
- Washer & Dryer Connections
- 40 Gallon Water Heater
- Roll-In Shower
- Accessible Lavatory
- Energy Efficient Gas Heat & Central Air
- Mini Blinds
- Spacious Closets
- Private Entry

Rental Amount \$ \_\_\_\_\_

Deposit Amount \$ \_\_\_\_\_

Application Fee \$ \_\_\_\_\_



7750 East 32nd Street North • Wichita, KS 67226 • Phone: (316) 636-1999 • Fax: (316) 634-1001

Professionally Managed by Mid-Land Management, Inc.

